



Product Summary

The Q31501 manual pneumatic controller is a perfect complement for use with Pawling EP's inflatable seals and clamps. This controller makes it easy to safely bring your new inflatable on-line - saving valuable development time. Just plug it into an existing air line, attach the inflatable, and you are in business.

These controllers are ready to ship, easy to use, and a cinch to install (see installation and operating guide for more details).

Contact us today at 845-855-1000 or sales@pawlingep.com to learn more about this and our other inflatable seals and clamps!

Features

- Small box size made of durable ABS plastic:
 - 3 3/16" (80.4 mm) wide x 3 5/16" (84.5 mm) deep x 6 11/16" (169.3 mm) tall
- Simple controls allow for ease of use
- Pressure regulator range from 0-60 psi (4.14 Bar)
- Internal dump valve releases air pressure quickly
- 1/8"-27 NPT (female) inlet and outlet ports come standard (see option list for additional connectors)
- New wing-style mounting brackets make it easy to install
- Kit includes hardware to install controller to most standard aluminum frame systems

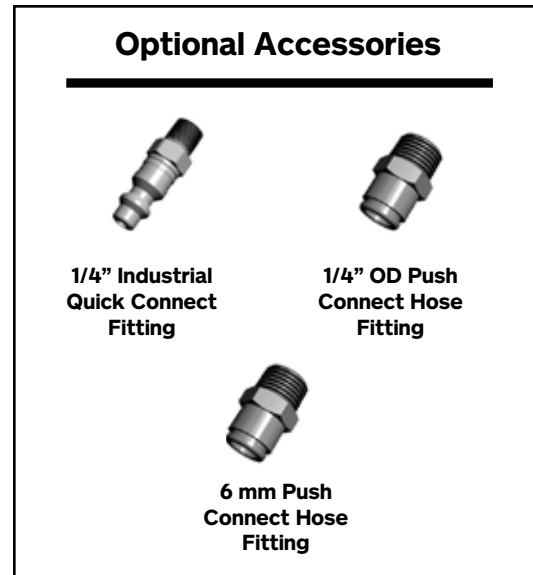
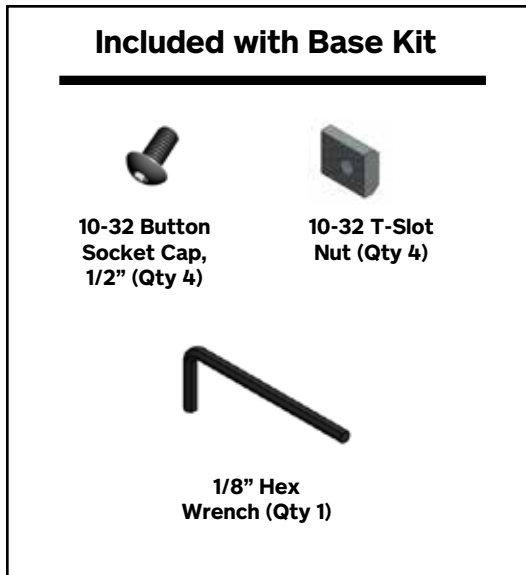
Industry Applications

- Controls two (2) Pneuma-Cels® used as inflatable workholding clamps during a machining operation
- Operates a UPS Class VI-certified inflatable door seal located on the front of the isolator glovebox for the pharmaceutical industry
- Installed on a custom colorant mixer with highly variabilized cycle times. Use of the Q31501 controller allows the operator the freedom to inflate/deflate the inflatable seal as necessary



Available Options

PART #	DESCRIPTION
Q31501-1	MANUAL PNEUMATIC CONTROLLER KIT (0-60 PSI), NO ADAPTERS
Q31501-2	MANUAL PNEUMATIC CONTROLLER KIT (0-60 PSI), 1/4" PUSH CONNECT ADAPTERS (2)
Q31501-3	MANUAL PNEUMATIC CONTROLLER KIT (0-60 PSI), 6MM PUSH CONNECT ADAPTERS (2)
Q31501-4	MANUAL PNEUMATIC CONTROLLER KIT (0-60 PSI), 1/4" INDUSTRIAL QUICK CONNECTORS (2)
Q31501-5	MANUAL PNEUMATIC CONTROLLER KIT (0-60 PSI), 1/4" INDUSTRIAL QUICK CONNECTOR (1), 1/4" PUSH CONNECT FITTING (1)



IMPORTANT NOTICE

Pawling EP products have a well deserved reputation for giving long, dependable service - even under severe use. For its Pneuma-Seal®, Pneuma-Cel®, and Q™ inflatable products, they are intended to be operated under contained pneumatic pressure and because conditions of handling, installation, use, and maintenance of such products are controlled exclusively by the user, the manufacturer disclaims all responsibility for damage or injury resulting from the use of any inflatable product and the user assumes all responsibility for any and all claims arising directly or indirectly from the product and/or its use.

Pawling Engineered Products, Inc. Phone 845-855-1000
157 Charles Colman Blvd. 800-431-0101
Pawling, NY 12564-1193 Fax 845-855-1139

E-Mail sales@pawlingep.com
Web pawlingep.com

